

---

# DOSSIER D'ENQUETE PREALABLE A LA DECLARATION D'UTILITE PUBLIQUE

*Département des Alpes-Maritimes*



**Commune de Grasse**

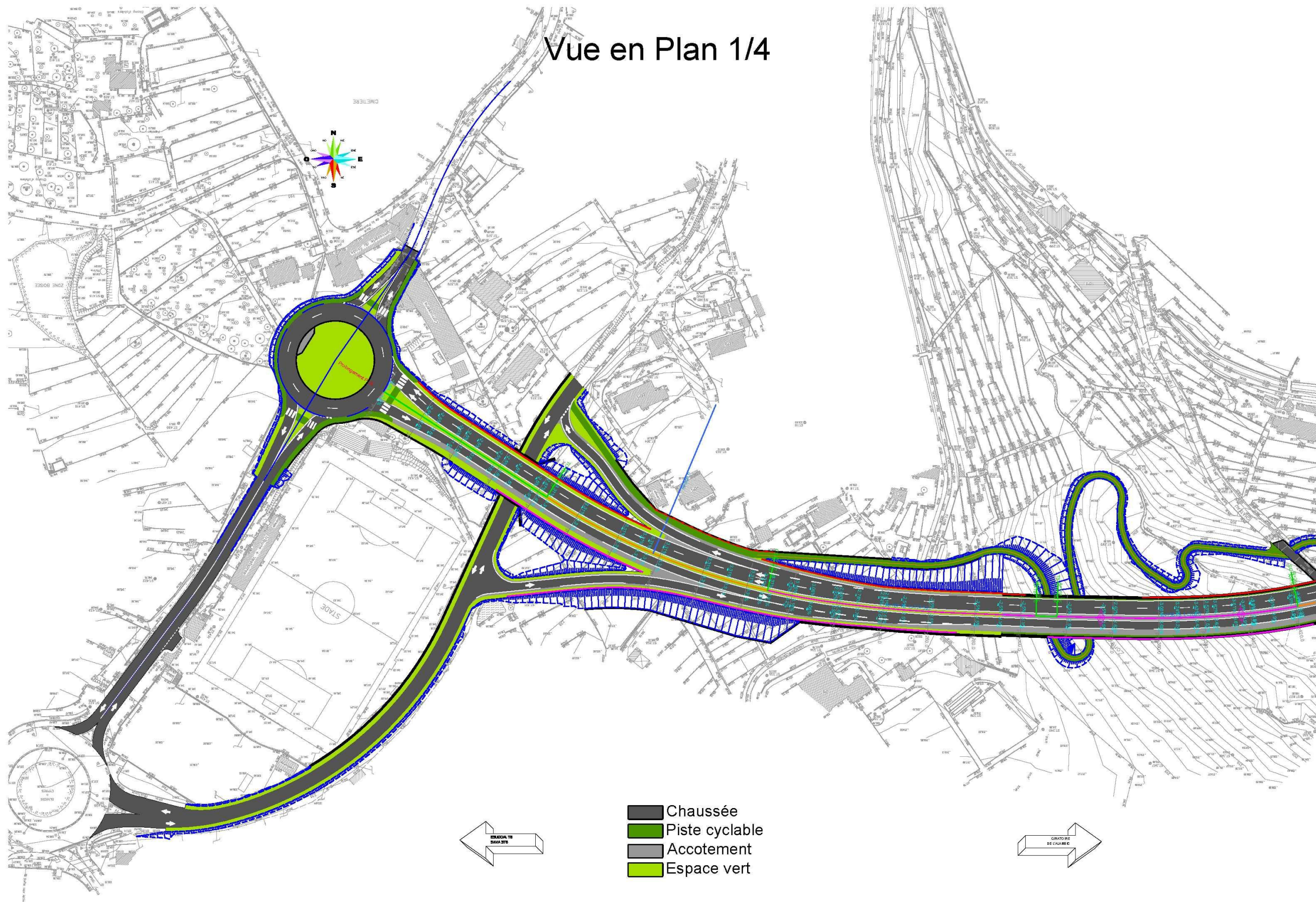


**Prolongement de la RD 6185 entre la RD 9 et la RD 2562**

**PIÈCE 4 – PLAN GÉNÉRAL DES TRAVAUX**

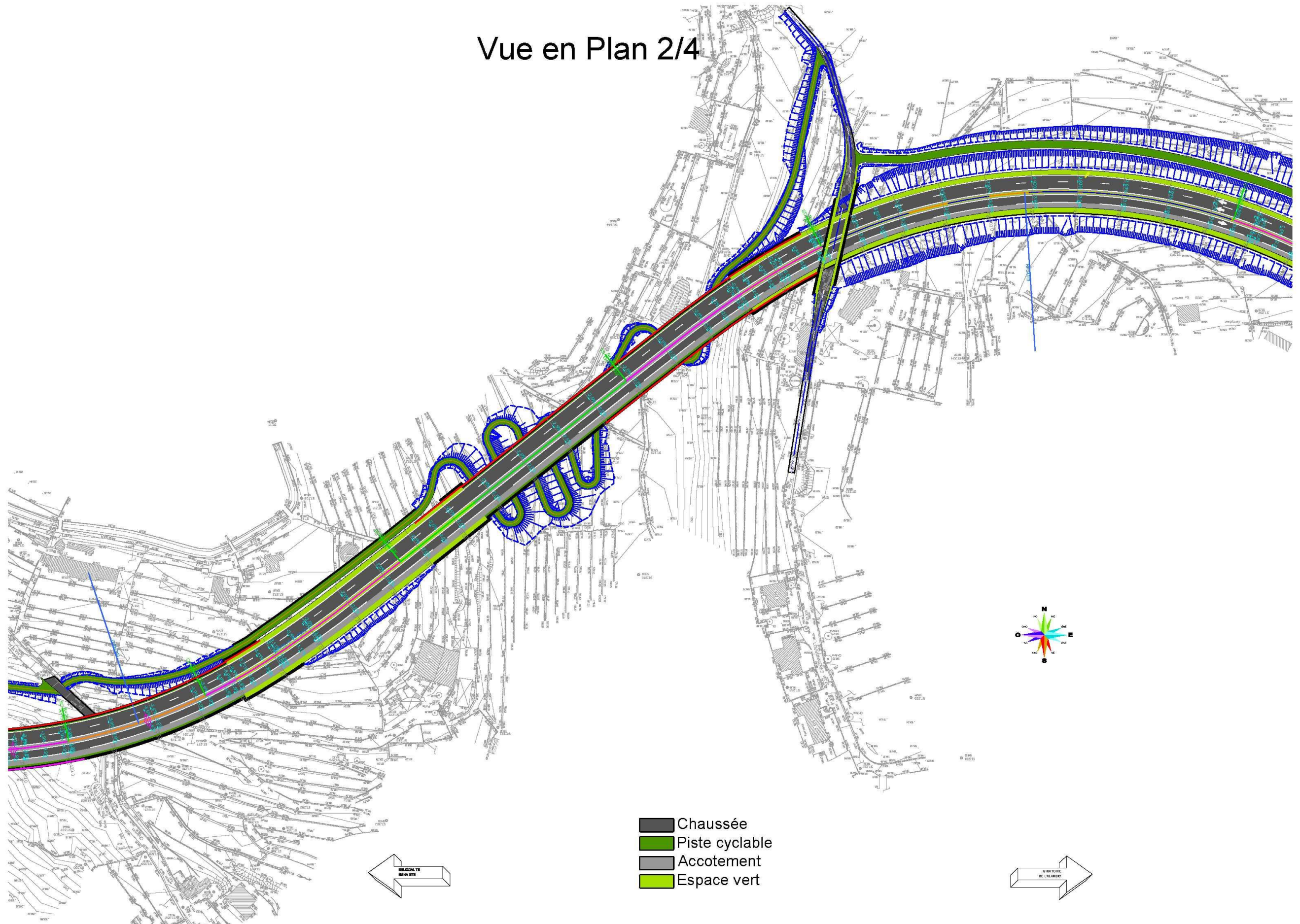
## **Plan général des travaux - Vues en plan**





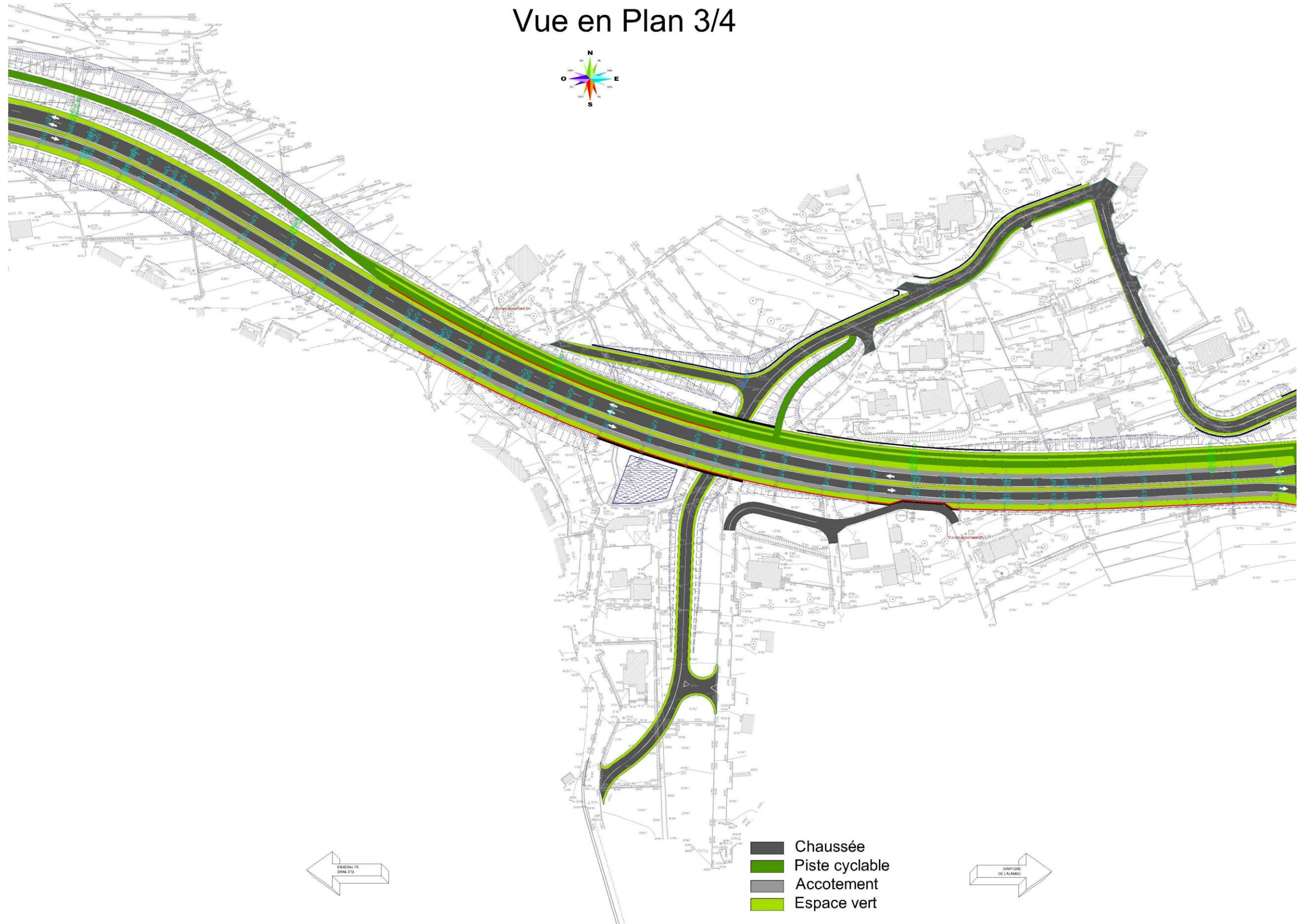
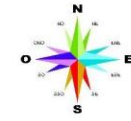


# Vue en Plan 2/4



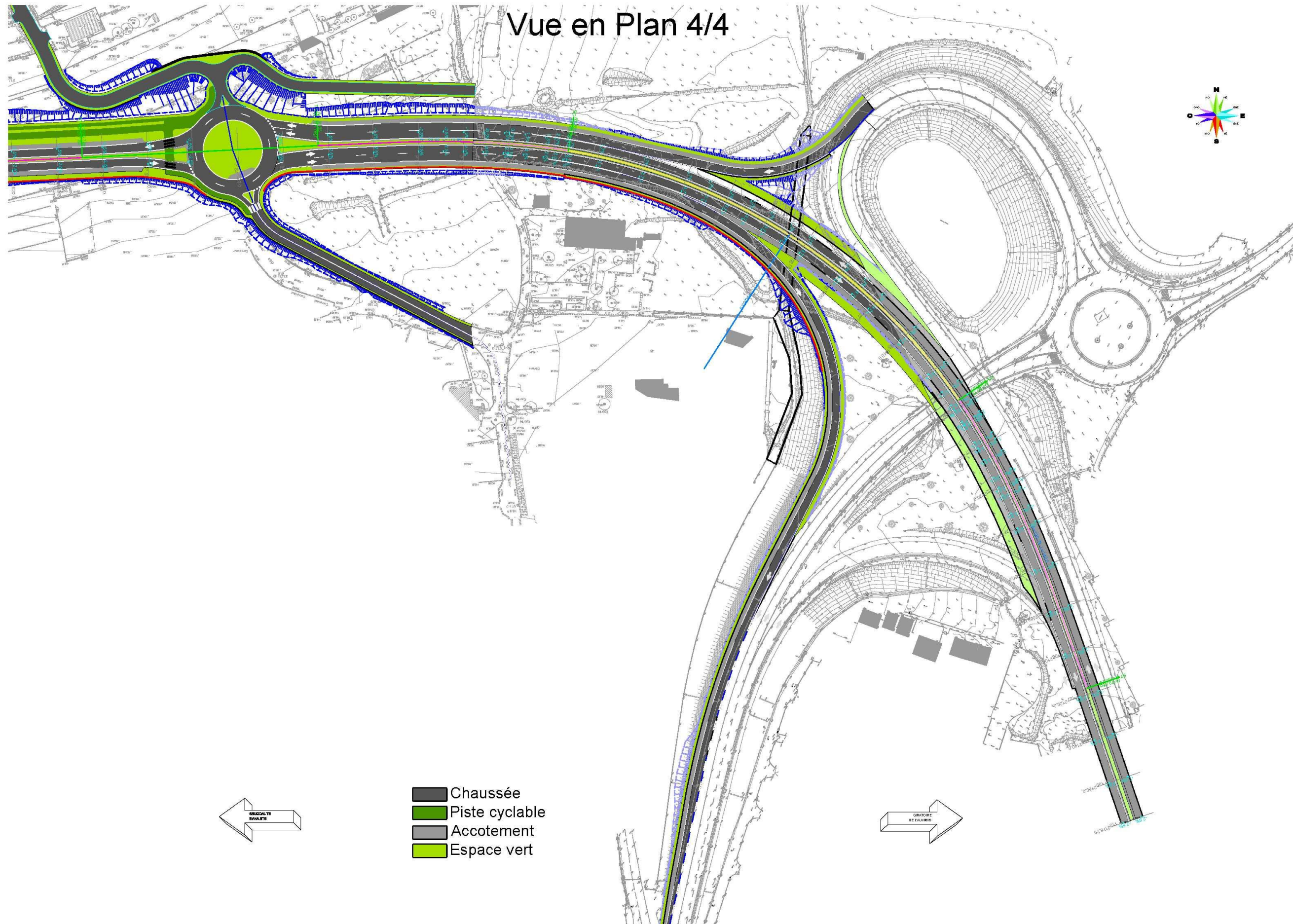


# Vue en Plan 3/4



- Chaussée
- Piste cyclable
- Accotement
- Espace vert





## Profils en travers du projet



# PROFILS EN TRAVERS TYPES



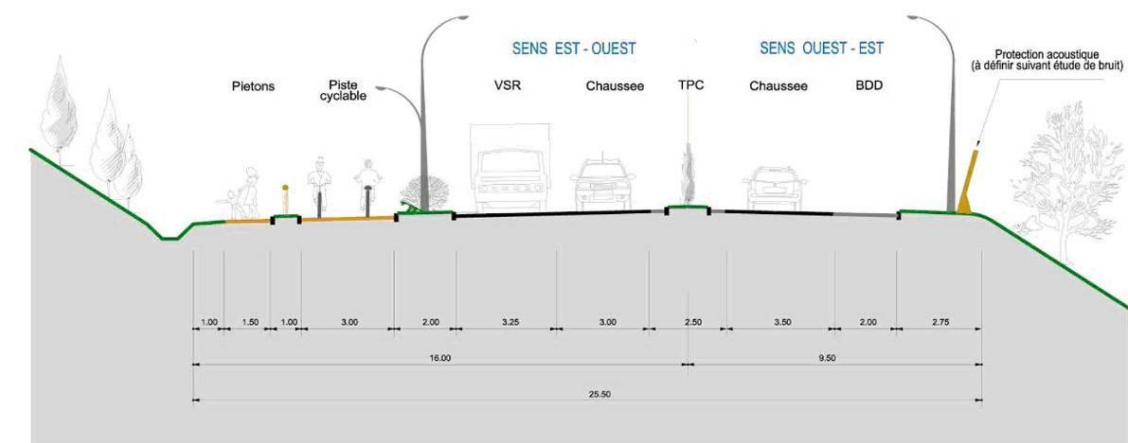
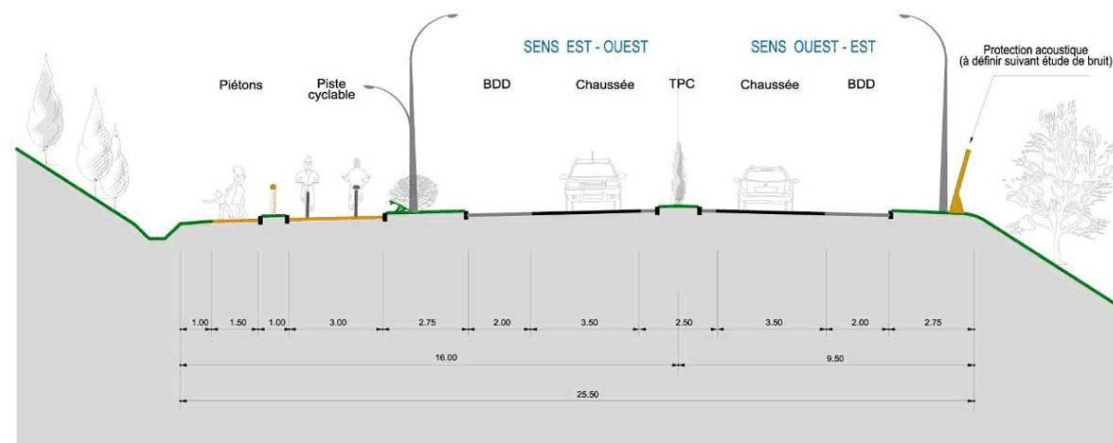
TPC = Terre Plein Central  
 BDD = Bande Dérasé Droite  
 VSR = Voie Supplémentaire en Rampe

1

**CASTORS / BASTIDES**

2

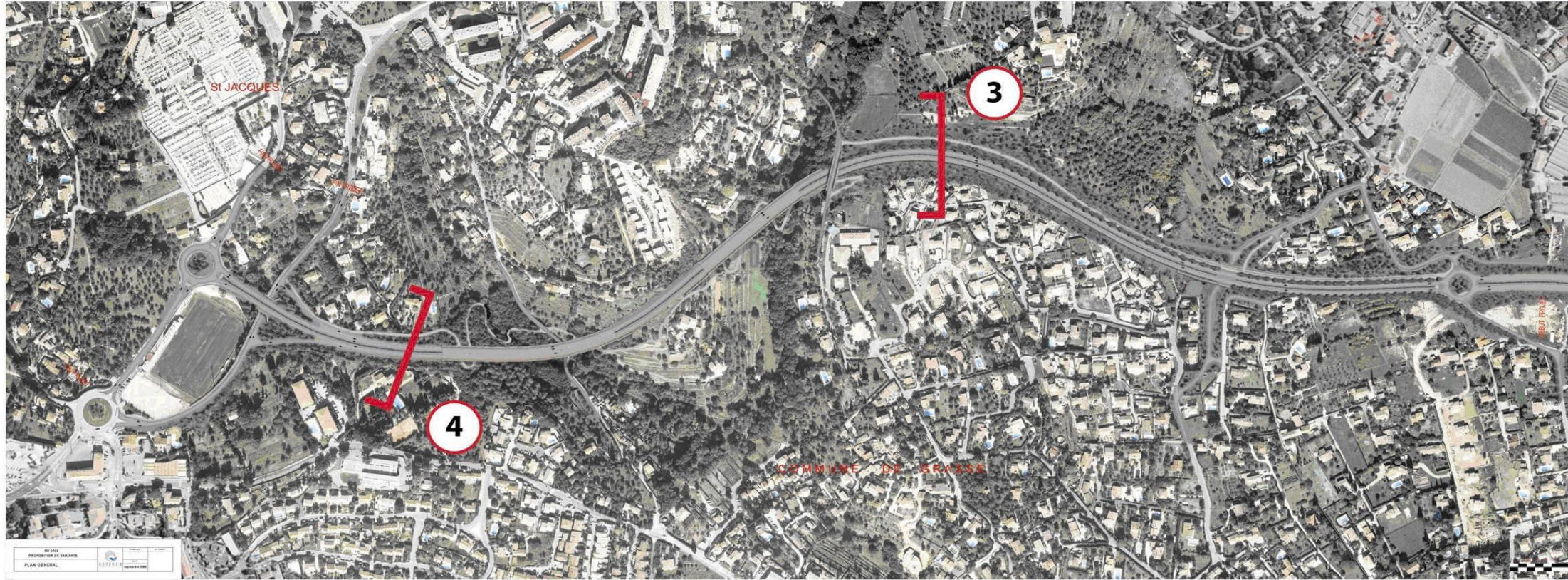
**BASTIDES / LOUBONNIERES**



Source : APSM, BETEREM, sept. 2008



# PROFILS EN TRAVERS TYPES



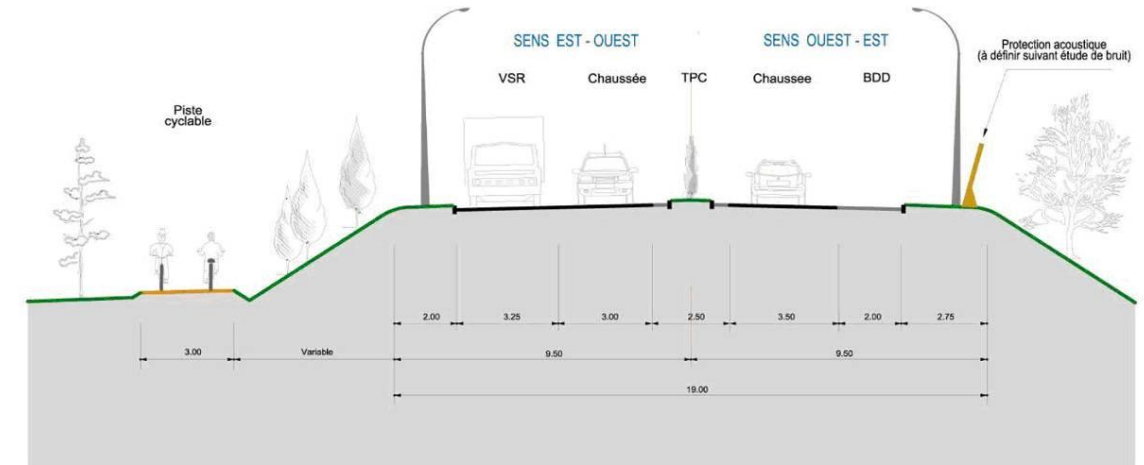
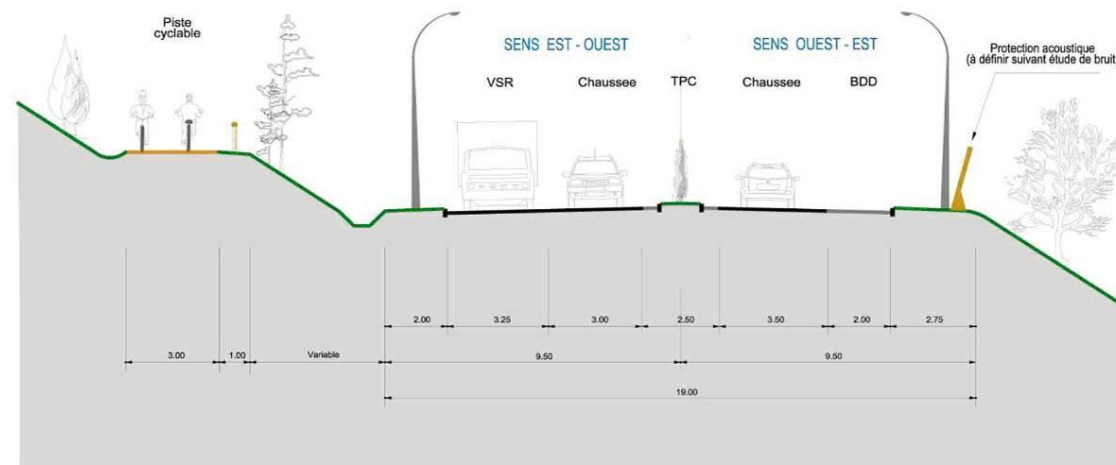
TPC = Terre Plein Central  
 BDD = Bande Dérasé Droite  
 VSR = Voie Supplémentaire en Rampe

3

**BASTIDES / LOUBONNIERES**

4

**CHATEAU FOLIE / LOUBONNIERES**



Source : APSM, BETEREM, sept. 2008



## Profil en long du projet



